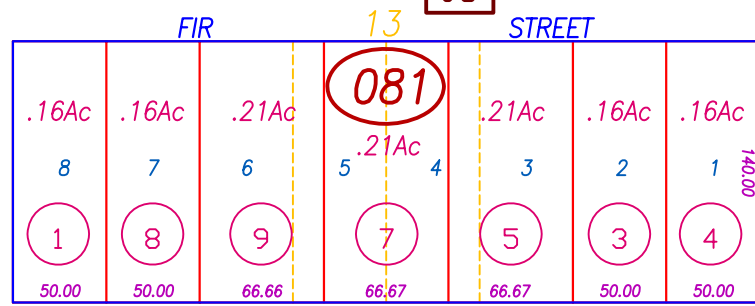
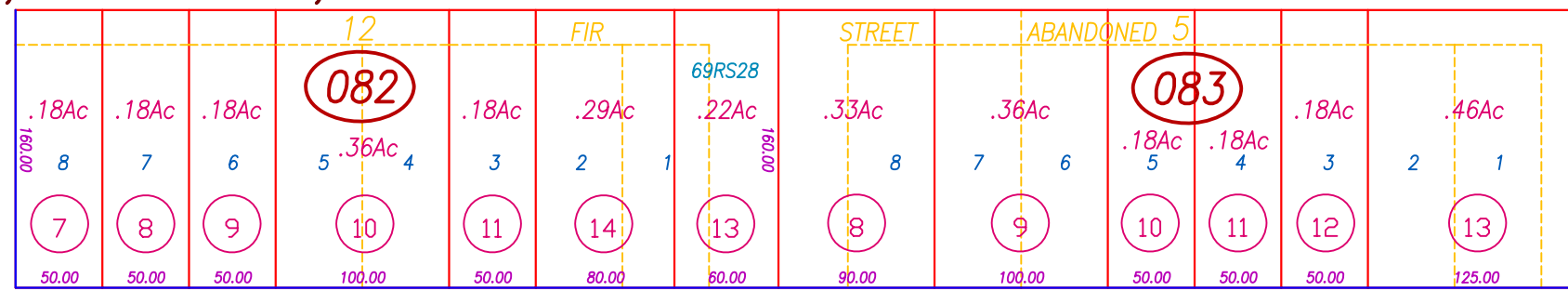


06

STIRLING CITY, PTN. SEC. 28, T.24N. R.4E. M.D.B.&M.



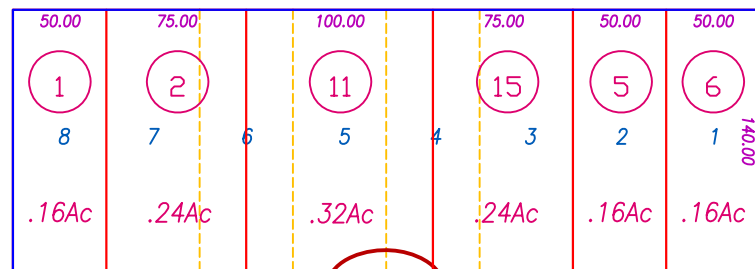
(LAUREL)



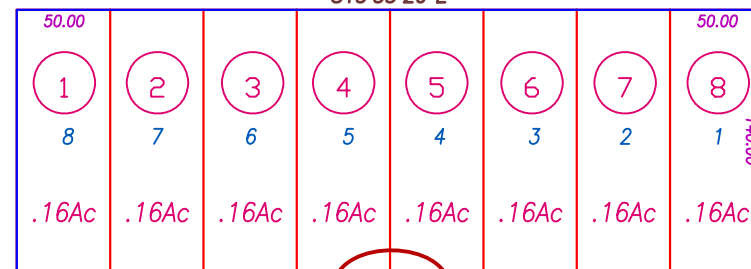
SKYWAY

143RS87

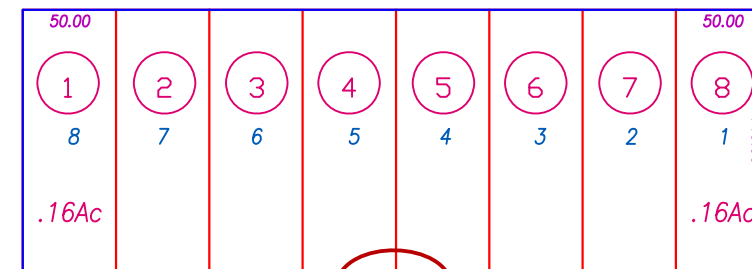
(STREET)



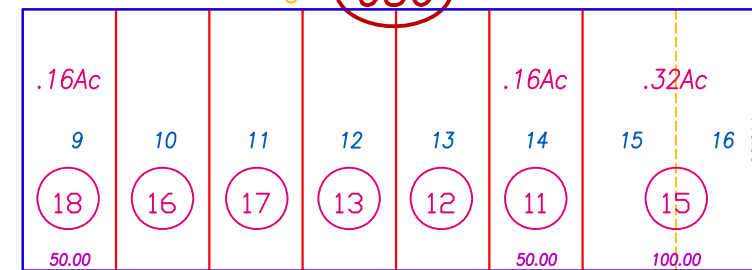
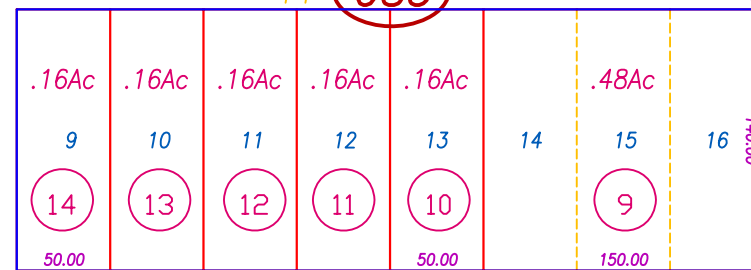
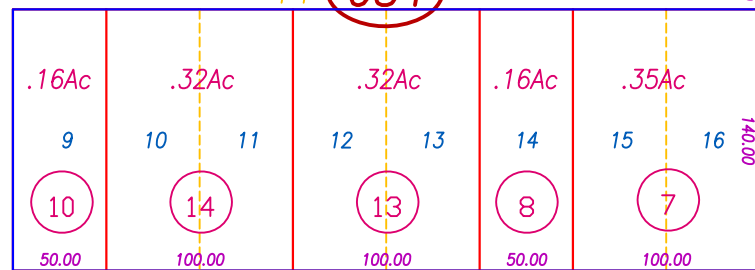
084



085

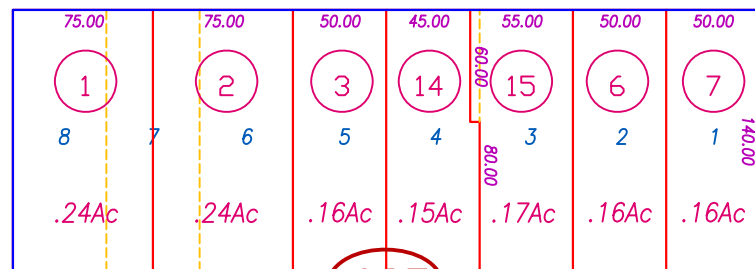


086

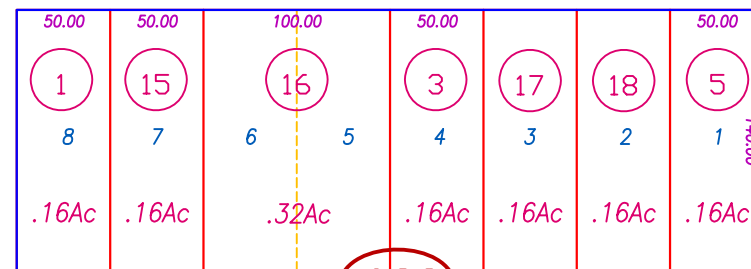


06

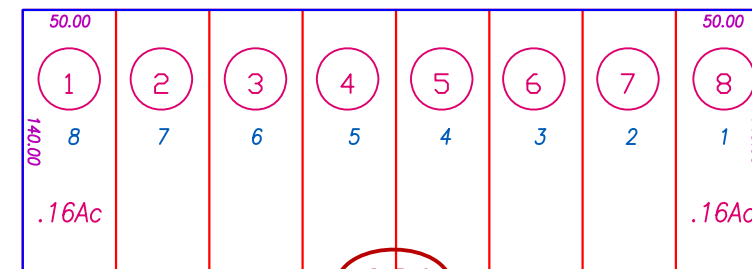
MANZANITA



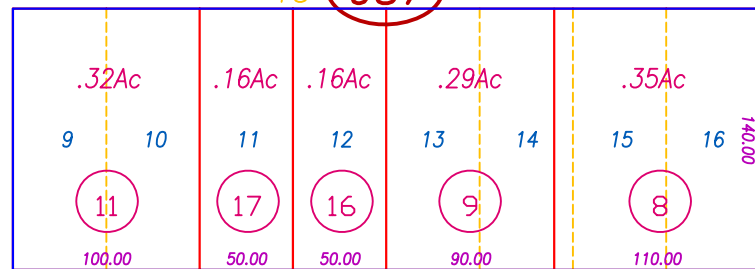
087



088



089



OAK STREET

07

All Assessors' maps are prepared for local property assessment purposes ONLY. Parcels shown thereon may not comply with State and local subdivision ordinances. No liability is assumed for use of information shown on any Assessors' map. ALL ACREAGES APPROXIMATE PER RECORDED INFORMATION.

| | | | |
|--|----|------------|------------|
| CREATED BY | DB | CREATED ON | 3-7-2002 |
| REVISED BY | DB | REVISED ON | 10-22-2007 |
| EFFECTIVE 2008-09 ROLL | | | |
| Compiled By The Butte County Assessor's Office | | | |

Butte County Assessor's Map
Book 59, Page 08